

B&C HOODED SOFTSHELL /W. - JW 937

SOFTSHELL JACKET



Detachable balaclava hood with adjustable drawstring and trendy stoppers



Full zip opening with chin protector



Full inner placket in shell fabric

Raglan Sleeves

Easy access for decoration via inner left breast zip



Flat stitching for greater comfort

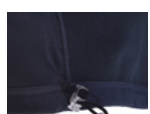
Perfect arm & elbow sleeve shape



Feminine cut



Adjustable bottom hem (with drawcord) Longer back



2 front side pockets with zips



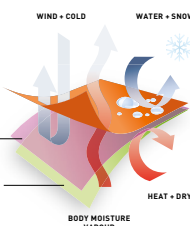
Cuffs with closing tabs & embossed plastic pull



OUTER LAYER
ALL WEATHER CONDITIONS
BLOCKING SHELL FABRIC

MID LAYER
FULL BONDED
BREATHABLE MEMBRANE

INNER LAYER
BREATHABLE AND ABSORBING
MICRO-FLEECE, FOR MAXIMUM
BODY HEAT RETENTION
AND DRYNESS



High performance Softshell jacket

3-LAYER SOFTSHELL JACKET 340G/M²

Outer layer: 94% polyester - 6% elastane
Woven Softshell

Mid layer: bonded breathable membrane,
windproof, waterproof

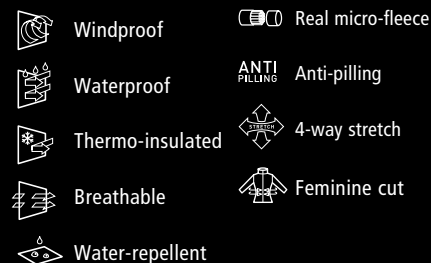
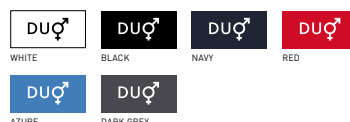
Inner layer: 100% polyester anti-pilling
micro-fleece and 100% polyester
mesh lining on front panels

Waterproof: 5000 mm

Breathable: 1000 MVP

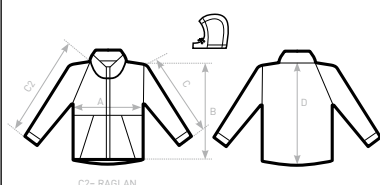
XS - S - M - L - XL - 2XL

1 pc/pack & 10 pcs/carton



DUO
CONCEPT

with B&C Hooded
Softshell /men



SIZES [CM]

B&C HOODED SOFTSHELL /W. JW 937

A HALF CHEST
B BODY LENGTH FROM NECK POINT
C SLEEVE LENGTH
FROM NECK POINT FOLLOWING THE CURVE
D CENTER BACK LENGTH

	XS	S	M	L	XL	2XL	3XL
A	44	46	48	50	52	54	-
B	59	61	63	65	67	69	-
C	67,5	69,5	71,5	73,5	75,5	77,5	-
D	62	64	66	68	70	72	-