

## NS412


### Recycled unisex zip sweatshirt



55% cotton/45% polyester. Made from 55% pre-consumer recycled cotton and 45% post-consumer recycled polyester. The GRS (Global Recycled Standard) certificate is issued by Ecocert Greenlife. Unisex. Straight fit. Size label with recycled cotton and recycled polyester logos. Enzyme-washed. Brushed fleece with contrasting Grey Marl inside. Recycled nylon zip. Self fabric lined hood with twin needle and bartack to keep the drawstring. Round hood drawstring with metal tip. Buttonhole at hood. Contrasting half-moon. 2x2 rib knit at neckline, bottom hem and cuffs. Twin needle stitch at cuffs, armholes, hem and neckline. Taped neck. Kangaroo pocket. Products made from recycled materials may show slight variations in composition and colour. No brand label at neckline, only a size tab for ease of rebranding. Comes with a cardboard hangtag listing the eco-friendly materials used in the making of the garment. Cardboard hangtag is attached with an Organic cotton string.

 300 g/m<sup>2</sup> 

#### Sizes

 XXS - XS - S - M - L - XL - XXL - 3XL - 4XL

#### More information

##### Logistic

 5  20

##### Country of origin

 IN - India

##### Customs code

 61102099

#### Washing instructions

#### Certifications



#### Colours



Recycled  
Anthracite  
Heather



Recycled  
Cream  
Heather



Recycled  
Navy  
Heather

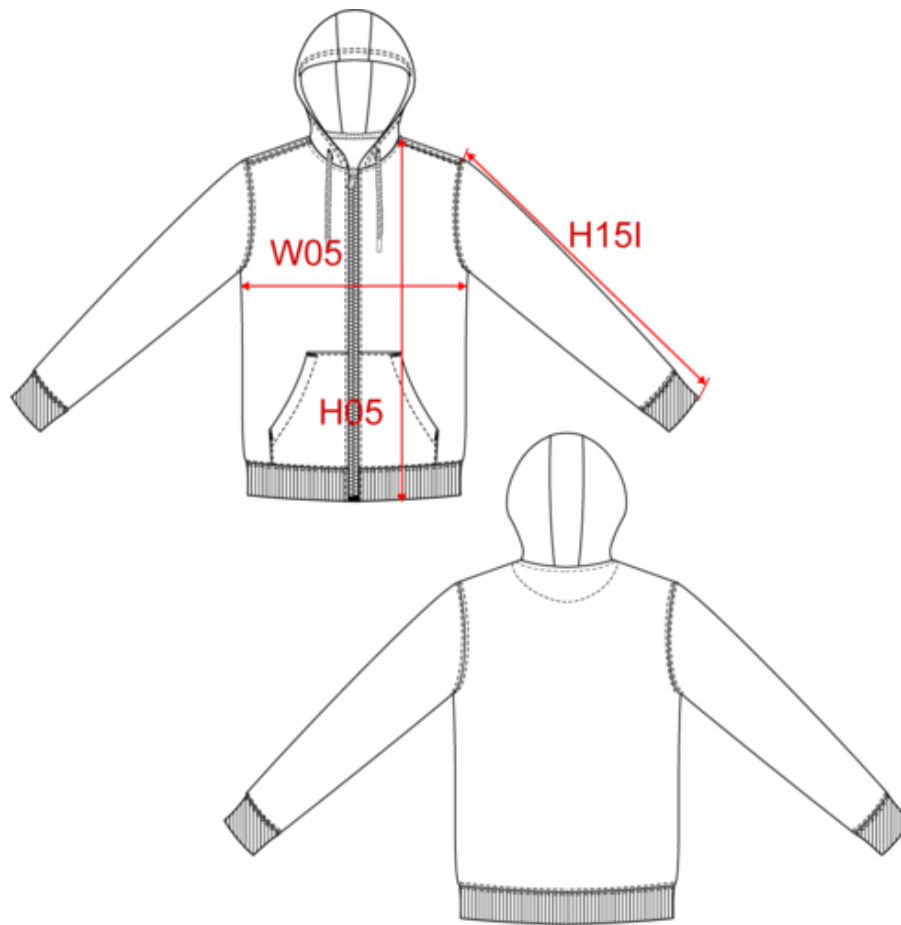


Recycled  
Oxford  
Grey

## NS412

Recycled unisex zip sweatshirt

Dimensions (cm)



| NS412 - Recycled unisex zip sweatshirt | XXS   | XS    | S     | M     | L     | XL    | XXL   | 3XL   | 4XL   |
|--|-------|-------|-------|-------|-------|-------|-------|-------|-------|
| NS412                                  | 46.00 | 49.00 | 52.00 | 55.00 | 58.00 | 61.00 | 64.00 | 67.00 | 70.00 |

# NS412

Recycled unisex zip sweatshirt

Colours information



**Recycled Anthracite Heather**  
RVB :  
Pantone C : Based on 446C  
Pantone TCX : Based on 19-0201TCX



**Recycled Cream Heather**  
RVB :  
Pantone C : Based on Warm Gray 1C  
Pantone TCX : Based on 13-4108TCX



**Recycled Navy Heather**  
RVB :  
Pantone C : Based on 432C  
Pantone TCX : Based on 19-4025TCX



**Recycled Oxford Grey**  
RVB :  
Pantone C : Based on 877C  
Pantone TCX : Based on 16-3915TCX

Logistic



5



20

| Sizes | Width (cm) | Height (cm) | Length (cm) | Net weight (kg) | Gross weight (kg) | Pieces/Box | Pieces/Bundle |
|-------|------------|-------------|-------------|-----------------|-------------------|------------|---------------|
| XXS   | 40         | 40          | 60          |                 |                   | 20         | 5             |
| XS    | 40         | 40          | 60          |                 |                   | 20         | 5             |
| S     | 40         | 40          | 60          |                 |                   | 20         | 5             |
| M     | 40         | 40          | 60          |                 |                   | 20         | 5             |
| L     | 40         | 40          | 60          |                 |                   | 20         | 5             |
| XL    | 40         | 40          | 60          |                 |                   | 20         | 5             |
| XXL   | 40         | 40          | 60          |                 |                   | 20         | 5             |
| 3XL   | 40         | 40          | 60          |                 |                   | 20         | 5             |
| 4XL   | 40         | 40          | 60          |                 |                   | 20         | 5             |