

B&C CREW BOMBER /MEN - JM 961

B&C
COLLECTION

MIDDLE WEIGHT JACKET



Middle weight bomber jacket with comfortable padding and concealed hood

POLYESTER PONGEE

Outer layer: 100% polyester pongee

Inner layer: 100% polyester quilted taffeta

S - M - L - XL - 2XL - 3XL

1 pc/pack & 15 pcs/carton

DUO
BLACK WITH
WARM GREY LINING

DUO
NAVY WITH
WARM GREY LINING

DUO
RED WITH
WARM GREY LINING

DUO
DARK GREY WITH
WARM GREY LINING



Waterproof



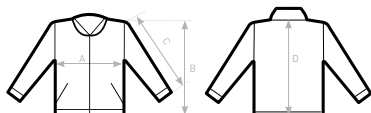
Windproof

- Contemporary cotton feel heavy rib on cuffs and bottom hem
- Standing collar and full length internal stormflap ensure wind protection
- Forward shoulder seams for better comfort and water protection
- Tone-on-tone, high quality SBS zippers
- 2 zipped hand pockets with overlap
- 1 inner wallet pocket with closing tabs
- Easy access for decoration thanks to the zip opening at the bottom of the lining
- Fabric tested for the following decoration techniques - screen printing, heat transfer, and embroidery.



DUO
CONCEPT

with B&C Crew Bomber /women



SIZES [CM]

B&C CREW BOMBER /MEN JM 961

	XS	S	M	L	XL	2XL	3XL
A HALF CHEST	-	56	59	62	65	68	71
B BODY LENGTH FROM NECK POINT	-	68	70	72	74	76	78
C SLEEVE LENGTH	-	66	67,5	69	70,5	72	73,5
D CENTER BACK LENGTH	-	66,5	68,5	70,5	72,5	74,5	76,5

B&C
COLLECTION

**OUTER
WEAR
/UNIT**

JACKET | MEN