

# B&C MULTI-ACTIVE /MEN - JM 825

B&C  
COLLECTION

## MIDDLE WEIGHT JACKET



**Middle weight multi-use jacket with comfortable fleece lining**

### POLYESTER 210T TAFFETA

Outer layer: 100% polyester 210T taffeta

Body lining: 100% polyester anti-pilling micro-fleece

Sleeve lining: 100% polyester quilted taffeta

S - M - L - XL - 2XL - 3XL

5 pcs/pack & 30 pcs/carton



WHITE WITH WHITE LINING



BLACK WITH WARM GREY LINING



NAVY WITH WARM GREY LINING



RED WITH WARM GREY LINING



ATOLL WITH WARM GREY LINING



DARK GREY WITH WARM GREY LINING



Showerproof

ANTI PILLING

Anti-pilling micro-fleece

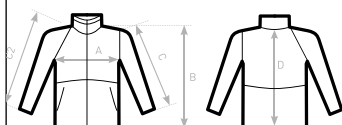
Windproof

- Concealed hood
- Contrasted micro-fleece lining for extra warmth
- Standing collar, adjustable hem and cuffs for great protection
- PU Coating for better water protection and breathability
- Forward seam on shoulder for better comfort and waterproofness
- 2 zipped hand pockets with overlap
- 1 inner wallet pocket with closing tab
- Zip at lower back gives easy full decoration access (front - back - sleeves)
- Maximised decoration areas
- Fabric tested for the following decoration techniques: screen printing, heat transfer, sublimation (for white only) and embroidery



DUO  
CONCEPT

with B&C Multi-Active /w.



C2= RAGLAN

### SIZES [CM]

#### B&C MULTI-ACTIVE /MEN JM 825

A HALF CHEST  
B BODY LENGTH FROM NECK POINT  
C SLEEVE LENGTH  
D CENTER BACK LENGTH

	XS	S	M	L	XL	2XL	3XL
A	55	58	61	64	67	70	73
B	72,5	74,5	76,5	78,5	80,5	82,5	84,5
C	62,5	64	65,5	67	68,5	70	71
D	71	73	75	77	79	81	83

B&C  
COLLECTION

OUTER  
WEAR  
/UNIT

JACKET | MEN