

B&C DNM Plug In /women - TW D71



MEDIUM FIT

Ultimate look short-sleeved T-shirt in Single Jersey with cold dye treatment for an eye-catching effect (pigment dye)

- Feminine thin self fabric collar
- Necktape
- Set-in sleeves
- Sleeve finish: folded bartacks reinforcing dye effect
- Feminine cut
- Bottom hemd with blind stitching
- Reinforced dye effect on seams (collar, cuffs, bottom hem)



BLUE CLASH



RUSTY CLASH



GREY CLASH

100% pre-shrunk ring-spun cotton

Single Jersey

145 g/m²

XS - S - M - L - XL

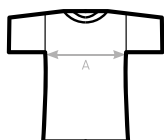
5 pcs/pack & 25 pcs/carton



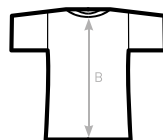
The characteristics of the treatments make each garment original and unique.
Variations should be considered as a sign of quality.



**DU♂
CONCEPT**
with B&C DNM Plug In /men



FRONT



BACK

SIZES [CM]

B&C DNM PLUG IN /W. TW D71
A HALF CHEST
B CENTER BACK LENGTH

XS	S	M	L	XL	2XL
38	41	44	47	50	-
54,5	56,5	58,5	60,5	62,5	-